

# New office build in Free Form timber: Swatch S1

Biel, CH



## Project details

Client	Swatch
Architecture	Shigeru Ban Architects
Project type	Office and administration, Art and culture
Construction type	Free Form
Services	Timber construction
Construction	2014-2019
Locality	Biel
Country	Switzerland

## New Swatch headquarters planned with parametric precision

The new Swatch headquarters houses offices and a small logistics centre. The 240-metre-long building, with two basement levels and four above-ground storeys made of steel concrete, is covered with a lattice-shell bearing structure made from laminated timber. We were responsible for the planning, production and execution of the complex timber construction.

The 11,000 m<sup>2</sup> roof support structure is the largest wooden lattice shell construction that our company has ever produced. An auxiliary substructure was required to support the main construction until it was completed. 6,500 Swiss spruce trees supplied the timber needed.

Double-curved laminated timber blanks form the triple-layered load-bearing latticework. Various materials were used in the design of the facade. Parameterisation of the building model allowed us to reduce more than 16,000 steel components and 140,000 connectors down to just a few types. The assembly also required absolute precision and would not have been possible without the planning carried out on the 3D model. The difficulty came in getting the right parts to the construction site at exactly the right time.

## Specific Contact



**Daniel Bucher**

Head of International Sales | Timber Construction | Free Form

T +41 71 388 52 51

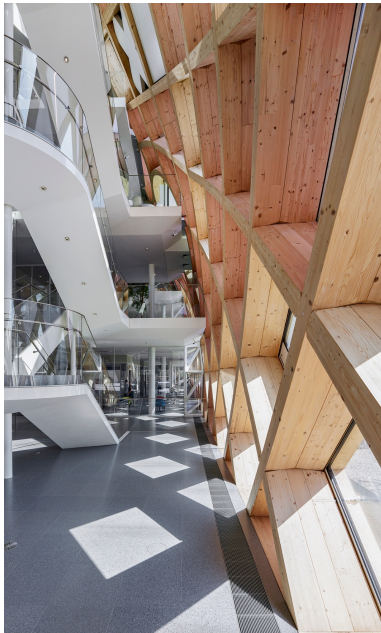
[daniel.bucher@blumer-lehmann.com](mailto:daniel.bucher@blumer-lehmann.com)

# New office build in Free Form timber: Swatch S1

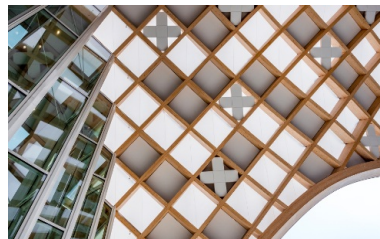
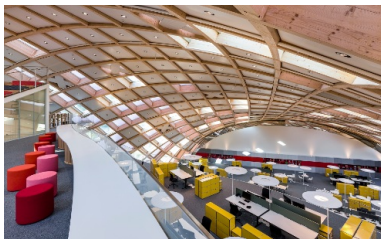
Biel, CH



The 240-metre-long snake bites into the roof of the Cité du Temps museum building.



The impressive lattice structure was produced from 100% Swiss timber.



The timber construction is a defining feature of the interior office space.

Elements made from various different materials were used in the facade.

# New office build in Free Form timber: Swatch S1

Biel, CH



A bridge crosses over the road to link the Swatch office building with the Cité du Temps museum.