

# Wood-concrete hybrid build for Stiftung Tanne

Langnau am Albis, CH



## Project details

Client	Schweizerische Stiftung für Taubblinde "Tanne"
Architecture	Scheibler & Villard
Project type	Healthcare and care facilities, Residential construction, apartment building
Construction type	Wood element construction
Services	Timber construction
Construction	2019
Locality	Langnau am Albis
Country	Switzerland

## Common sense timber structure for Stiftung Tanne school and residential building for deafblind people

Deafblind people are guided by their sense of touch and smell and the perception of vibrations. The new school and residential building of the 'Tanne' Swiss Centre of Competence for the Deafblind is constructed with these senses in mind. Our project team planned and created the timber construction and the facade.

With extensive expertise and experience in structural engineering, facade construction and interior design, we were able to make a substantial contribution to the project for the hybrid construction made of timber and concrete, while also providing several different trades. In constructive collaboration and constant coordination with all project stakeholders, the two interconnected, three-storey buildings were built for living and learning. Their core and the underground garage are made of concrete, as are the ceilings that were set in concrete on the timber supports. The timber volumes attached to the concrete core form the classrooms and living spaces. Vertical spruce boarding was used for the facade and set off with milled or perforated design elements. For the architect, the benefits of the timber construction lie in its implementation as the timber and concrete project teams can work simultaneously thanks to the prefabrication of the wood elements. Sustainability also plays an important role. The architect also noted that the residents appreciate the comfortable living environment and really enjoy touching the wood.

[info@blumer-lehmann.com](mailto:info@blumer-lehmann.com)  
[blumer-lehmann.com](http://blumer-lehmann.com)

## Specific Contact



### Lukas Osterwalder

Division Manager Timber and Modular Construction | DE | AT | LU  
Member of the Executive Board

T +41 71 388 58 20

[lukas.osterwalder@blumer-lehmann.com](mailto:lukas.osterwalder@blumer-lehmann.com)

The fascinating world of wood

# Wood-concrete hybrid build for Stiftung Tanne

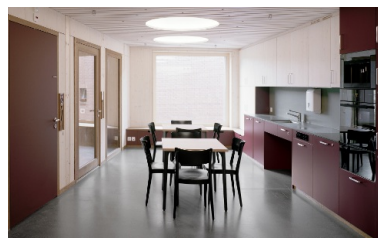
Langnau am Albis, CH



Comfortable recreational room in the residential home for deafblind people.



Wood also dominates the covered balcony.



Various materials to help guide the way have also been used in the bright entrance area.

View of a comfortable kitchen in the residential home of the Tanne Centre of Competence.